



Automatic Control Units

Quantris

The Best-Seller of the AUTOMATIC control units, produced at a thousand or so exemplaries, and sold worldwide

The right way to drive your testing machines

- **Great easiness of use**

Thanks to its friendly user menus, its large LED display and its programmable load rate pacer, one touch is enough for Quantris to run automatically the entire compressive, tensile or flexural test.

- **Excellent reliability and accuracy**

The Class 1 readout, according to EN 12-390 associated with a high quality pressure transducer (0,15 % accuracy) will guaranty a high quality measurement.

- **Able to update any make of testing frames**

Quantris is able to drive every kind of compressive, tensile or flexural hydraulic testing machines.

Furthermore, Quantris can be connected to up to 4 different testing frames, and can be adapted to any model, whether from 3R or other manufacturers.

- **Fully automatic control**

Necessitating no human intervention during the test, Quantris will automatically manage the requested load rate as well as crack detection.



Some characteristics :

- Suitable for hydraulic frames
- Designed to run up to 4 testing machines
- Ergonomic frame with telescopic working table
- Multi-piston hydraulic pump, for regular flow and reliability
- Electric motor immersed in the tank for better cooling
- Large capacity stainless-steel oil tank (40 litres) mounted on shock absorbers
- Programmable load pacer in kN/sec or kN/min
- Double readout display (Large LED for Load and LCD for strength or menus)
- Integrated printer for printing of results
- RS 232 Output



Automatic Control Units

Quantris

The right way to drive your testing machines

Product Information

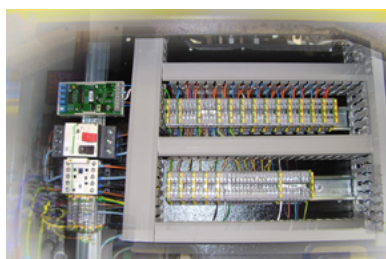
Industrial console :

- Industrial console
- LCD display + 5 digits display
- Waterproof industrial keyboard
- Safety locking key
- RS 232 output
- Supply connector, main switch & fuses



Control / Measurement :

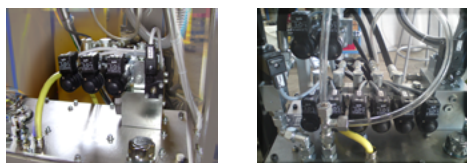
- 5 digital input channels
- 12 digital output channels
- 1 analog input on 5 switched channels
- 1 analog output channels
- RS 232 output



Power Drive :

Hydraulic plant

- Driving by pressure from 5 to 400 bar or from 10 to 700 bar
- Multi-pistons pump from 0.3 to 5 l/min
- Oil flow adjustable by means of one or two sets of pistons
- Submerged motor dynamically balanced
- Large capacity Stainless steel tank
- High pressure valves – Possible to drive up to 4 machines
- External oil gauge and oil temperature



General features:

- Size: Height=1020 mm, length=580 mm, width=480 mm
- Weight: 80 kg (up to 90 kg according to options)
- Power supply console: 230 V + E
- Power supply for hydraulic pump: 3 x 400 V + E



Recherches & Réalisations Rémy sas

1 Rue Joseph Marie Jacquard
ZI Nord - BP 80631
82006 Montauban Cedex - France

TÉL + 33 (0)5 63 66 52 80
FAX + 33 (0)5 63 66 52 71

Contact.commercial@3r-rpp.com



WWW.3R-LABO.COM